

Deepwater Port License Application Blue Marlin Offshore Port (BMOP) Project

Volume I – Appendix A

Submitted to:



Maritime Administration
Office of Deepwater Ports and Offshore
Activities
1200 New Jersey Avenue SE, W21-309
Washington, DC 20590



United States Coast Guard
Commandant (CG-OES-2)
Stop 7509
2703 Martin Luther King Jr. Ave. SE
Washington, DC 20593-7509

Submitted by:

***Blue Marlin Offshore Port LLC
8111 Westchester Drive
Suite 600
Dallas, Texas 75225***

Prepared by:



September 2020

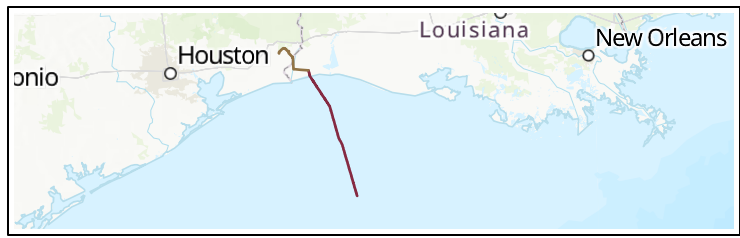
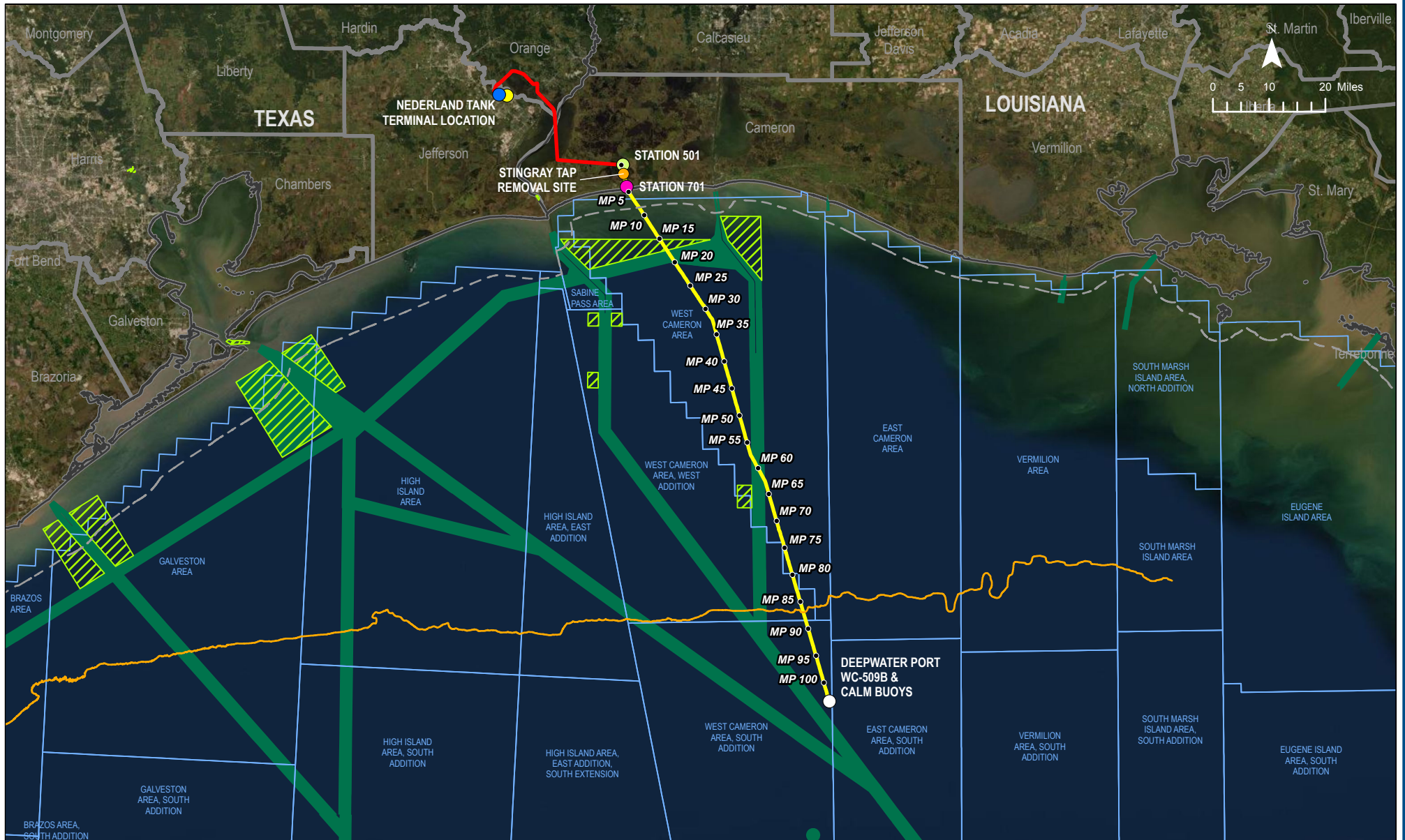
Deepwater Port License Application Blue Marlin Offshore Port (BMOP) Project

- Volume I:** **General (Public), including Deepwater Port License Application and Appendices**
(herein)
- Volume IIa: Offshore Project Components Environmental Evaluation
(Public)
(under separate cover)
- Volume IIb: Onshore Project Components, Environmental Evaluation
(Public)
(under separate cover)
- Volume III: Technical Information
[*Confidential*]
(under separate cover)
- Volume IV: Company and Financial Information
[*Confidential*]
(under separate cover)

APPENDIX A

FIGURES

BMOP PROJECT - APPENDIX A FIGURE 1 - PROJECT OVERVIEW MAP



LEGEND	
● EXISTING OFFSHORE PIPELINE MILEPOSTS	— EXISTING PIPELINE TO BE CONVERTED TO OIL SERVICE
● STINGRAY TAP REMOVAL SITE	— PROPOSED ONSHORE PIPELINE (NEW BUILD)
● NEDERLAND TANK TERMINAL LOCATION	— DEPTH CONTOUR -108'
● NEDERLAND PUMP STATION	— STATE WATERS BOUNDARY
● STATION 701 (TO BE CONVERTED TO OIL SERVICE)	▨ SAFETY ANCHORAGES
● STATION 501 (TO BE CONVERTED TO OIL SERVICE)	▨ PROTRACTION AREA
○ DEEPWATER PORT WC-509B AND CALM BUOYS	▨ SHIPPING FAIRWAY
	▨ COUNTY / PARISH
	▨ STATE BOUNDARY

BLUE MARLIN OFFSHORE PORT PROJECT	
PROJECT OVERVIEW MAP	
COUNTY/PARISH: VARIOUS	DRAWN BY: CA
STATE: TX/LA	CHECKED BY: CW
DATE: 2020/09/17	PROJECTION: NAD 1983 UTM Zone 18N


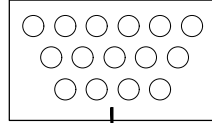
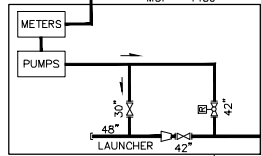
PREPARED BY	
EXP Energy Services Inc.	
T: +1 850 385 5441	
F: +1 850 385 5523	
1800 WEST LOOP SOUTH, SUITE 850	
HOUSTON, TX 77027, USA	
	
BLUE MARLIN OFFSHORE PORT PROJECT	
APPENDIX A FIGURE 1	
DWG: 0802-01-005	SHEET: 1 OF 1

FIGURE 2 - BMOP DWP PROCESS FLOW DIAGRAM

NEderland - SUNOCO TERMINAL



**NEderland
BMOP FACILITIES**
MOP = 1480



LAUNCHER
~MP 0.0

42"

42"

42"

42"

42"

42"

42"

42"

42"

42"

42"

42"

42"

42"

42"

42"

42"

42"

42"

42"

42"

42"

42"

42"

42"

42"

42"

42"

42"

42"

42"

42"

42"

42"

42"

42"

42"

42"

42"

42"

42"

42"

42"

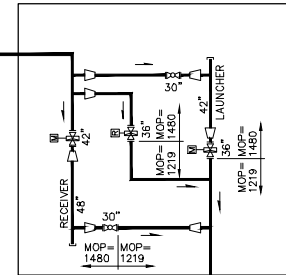
42"

42"

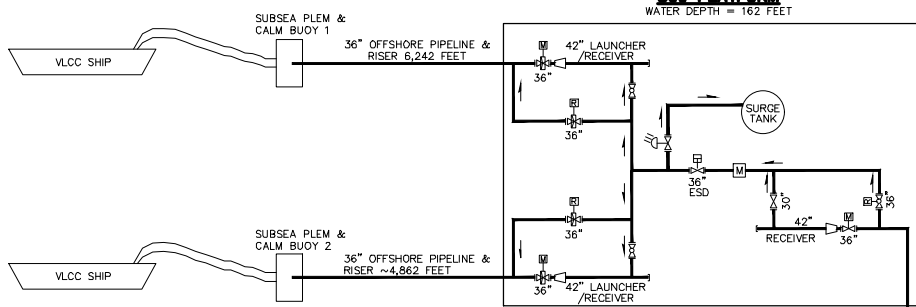
42"

42"

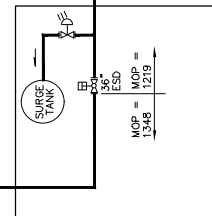
STATION 501
~MP 37.0



**WEST CAMERON
508 PLATFORM**
WATER DEPTH = 162 FEET



STATION 701



**WEST CAMERON
148 PLATFORM**

36" OFFSHORE PIPELINE ~72 MILES
1348 PSIG

36" OFFSHORE PIPELINE ~28 MILES
1348 PSIG

36" ONSHORE PIPELINE ~4 MILES
1219 PSIG

42" PIPELINE ~37 MILES
1480 PSIG

FIGURE 3 - BMOP DWP SCHEMATIC WITH VLCCs

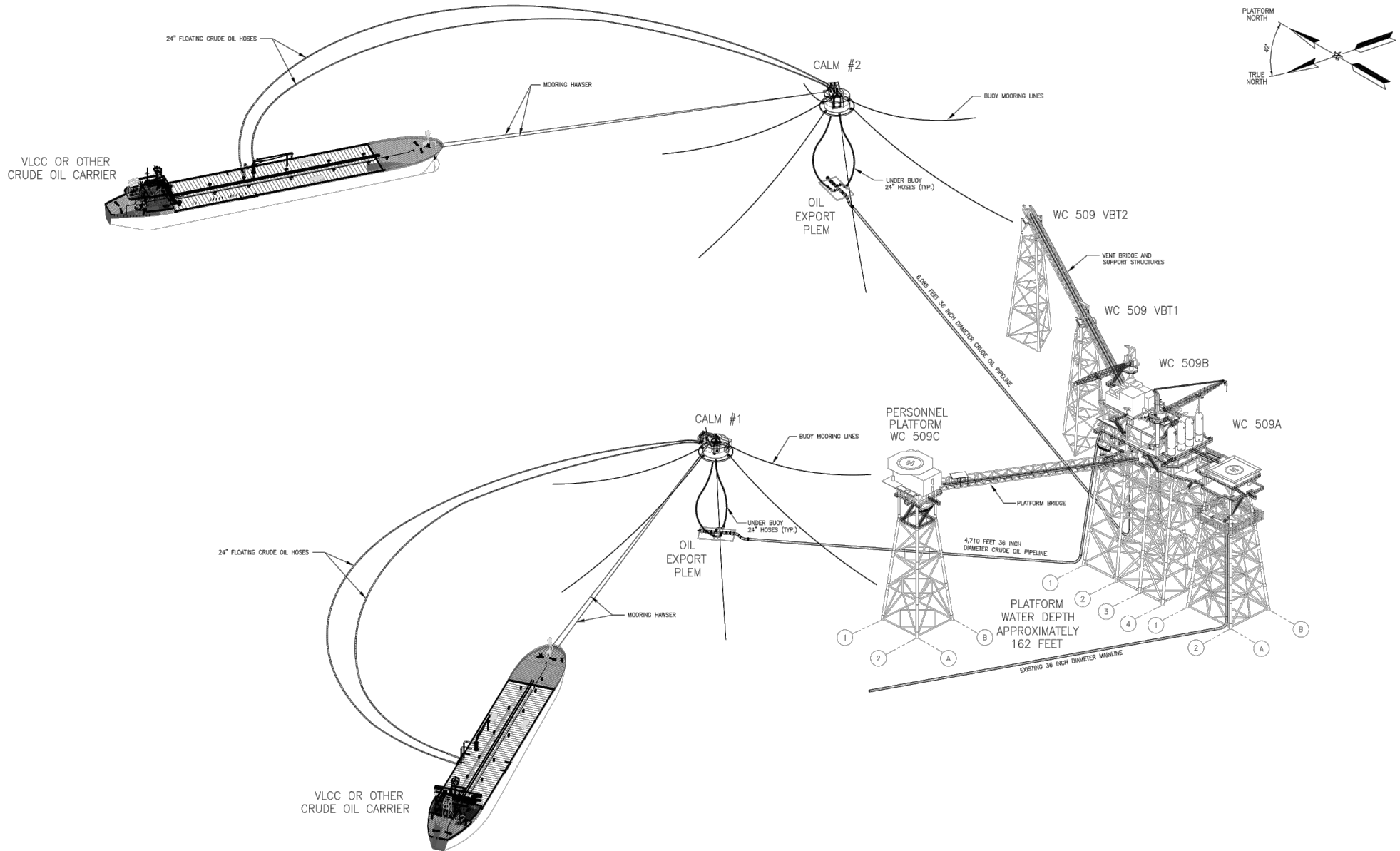


FIGURE 4 - SCHEMATIC OF THE WC 148 PLATFORM

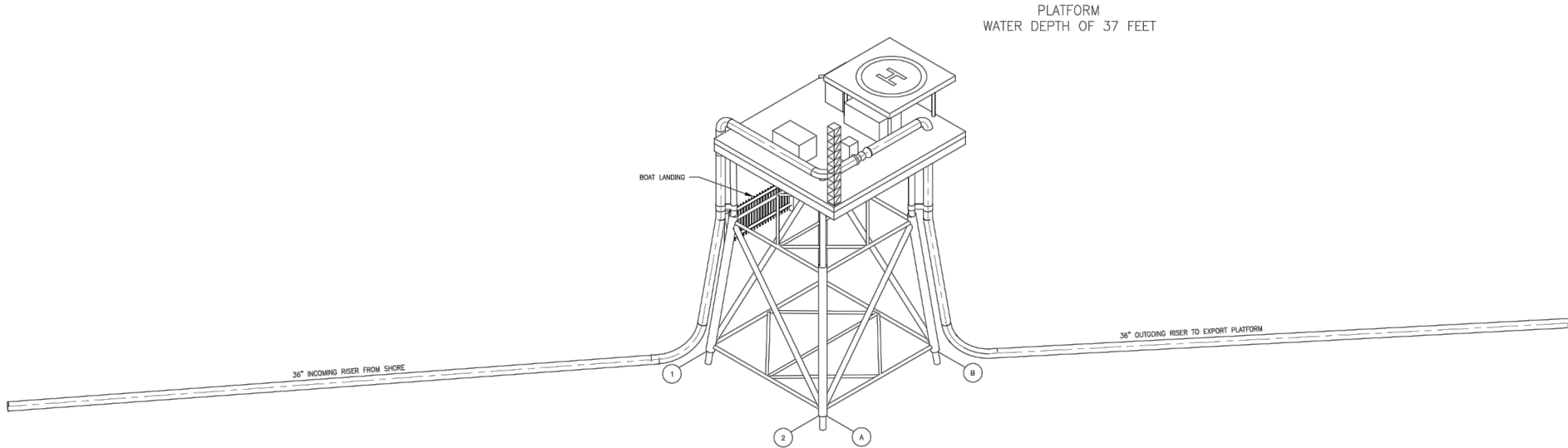
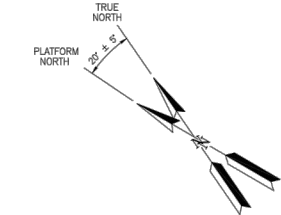


FIGURE 5 - WC 509 PLATFORM COMPLEX OVERVIEW

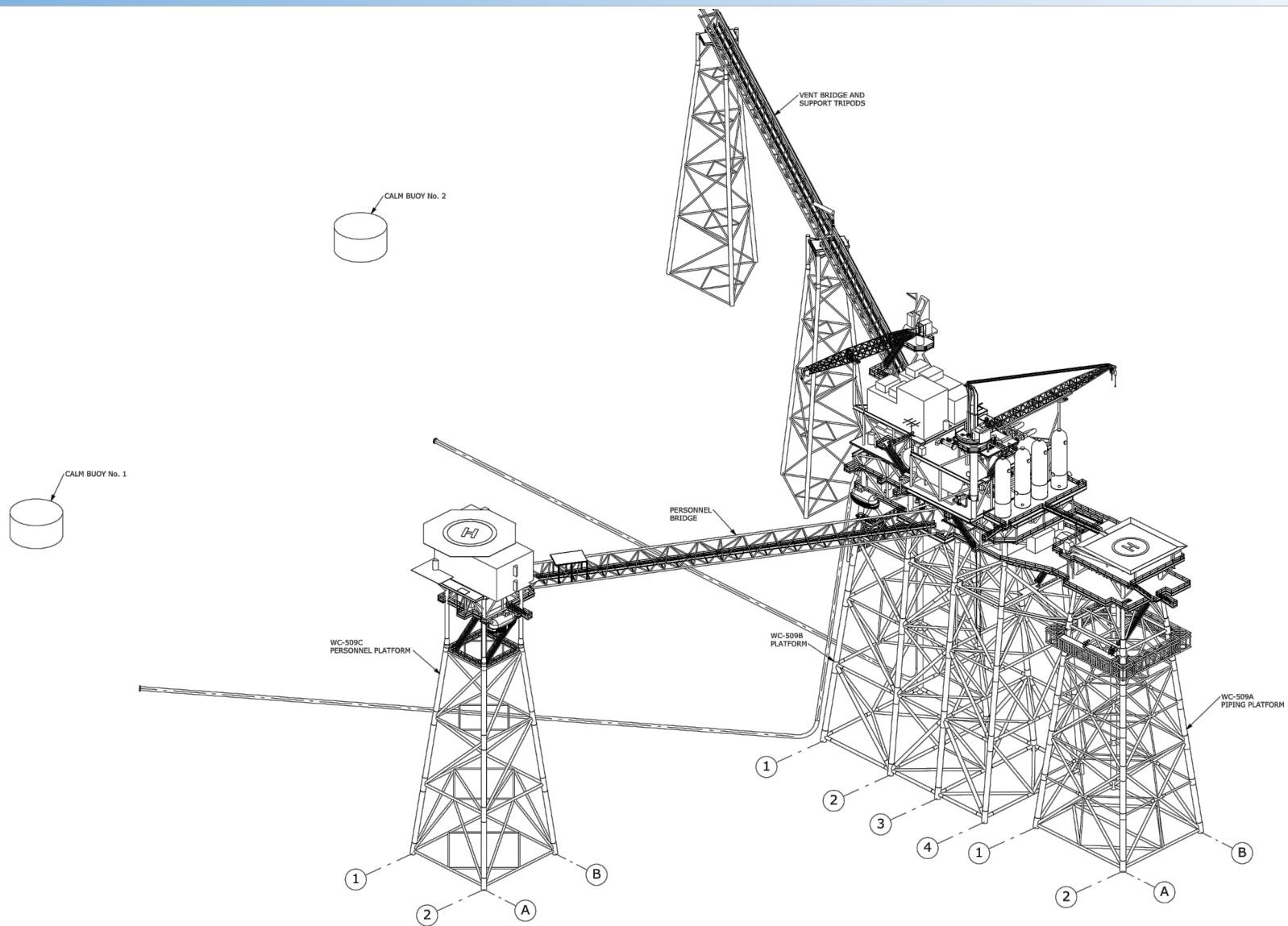


FIGURE 6.A - OCS LEASE BLOCKS CROSSED BY THE BMOP PROJECT

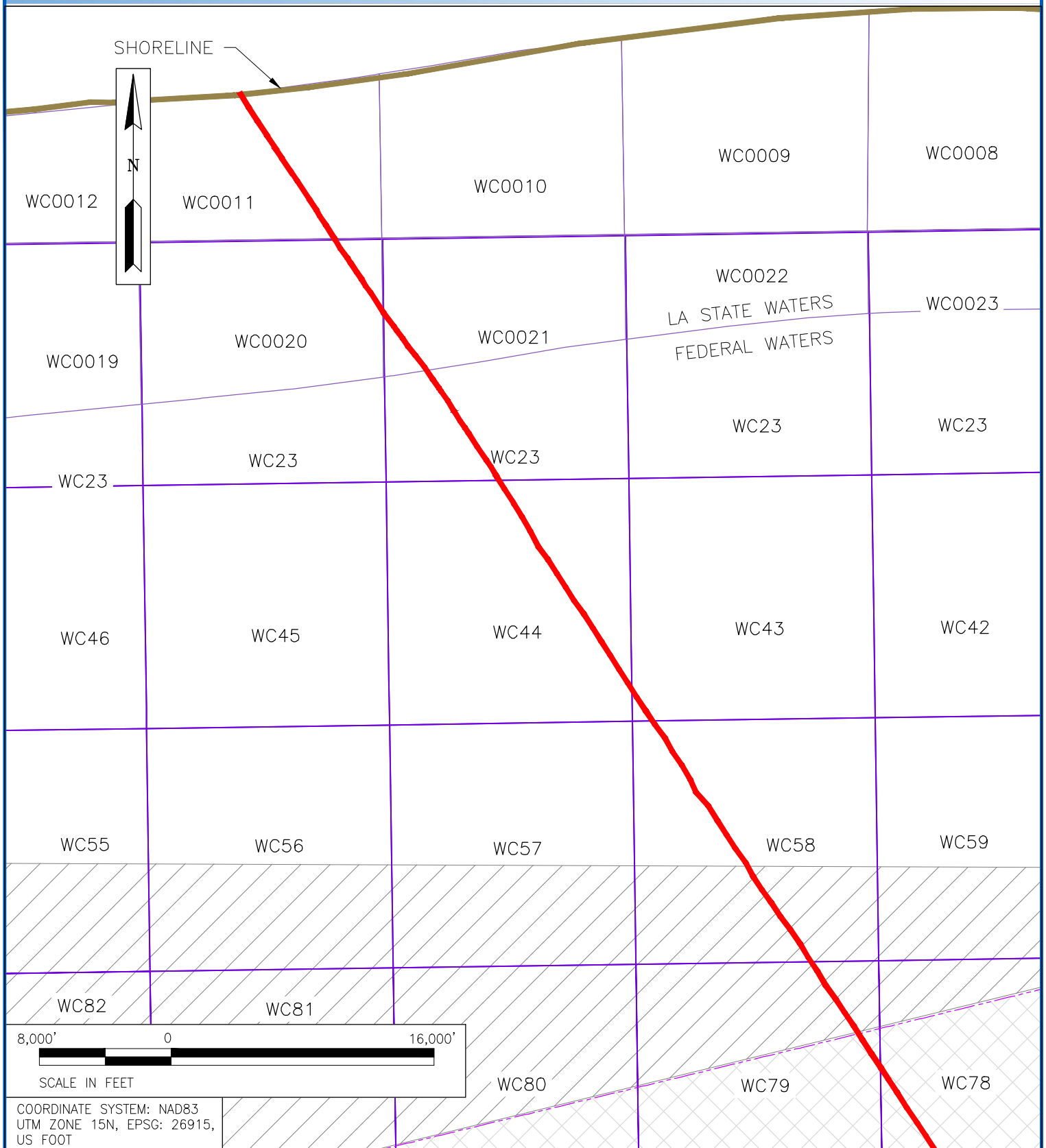


FIGURE 6.B - OCS LEASE BLOCKS CROSSED BY THE BMOP PROJECT

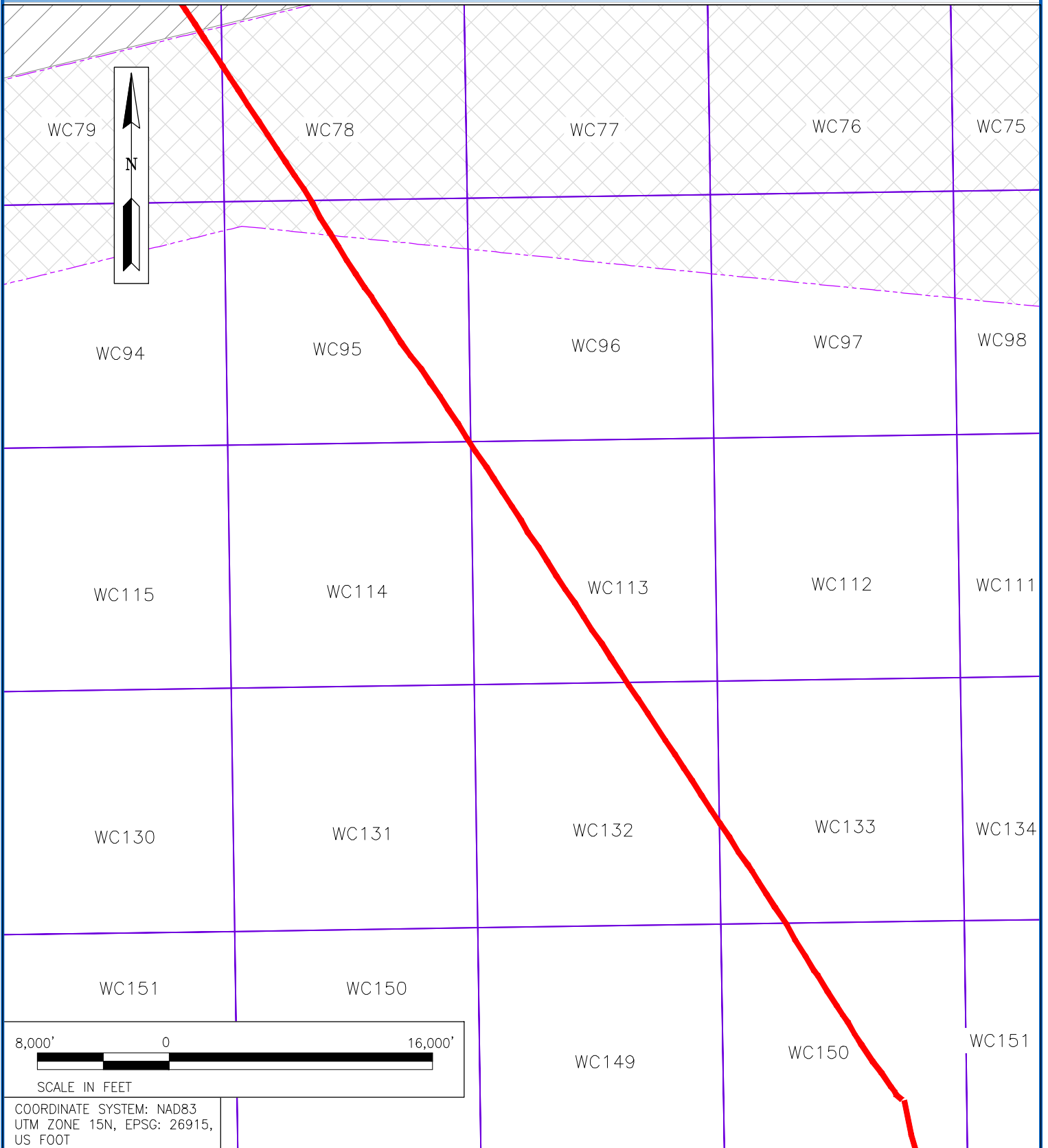


FIGURE 6.C - OCS LEASE BLOCKS CROSSED BY THE BMOP PROJECT

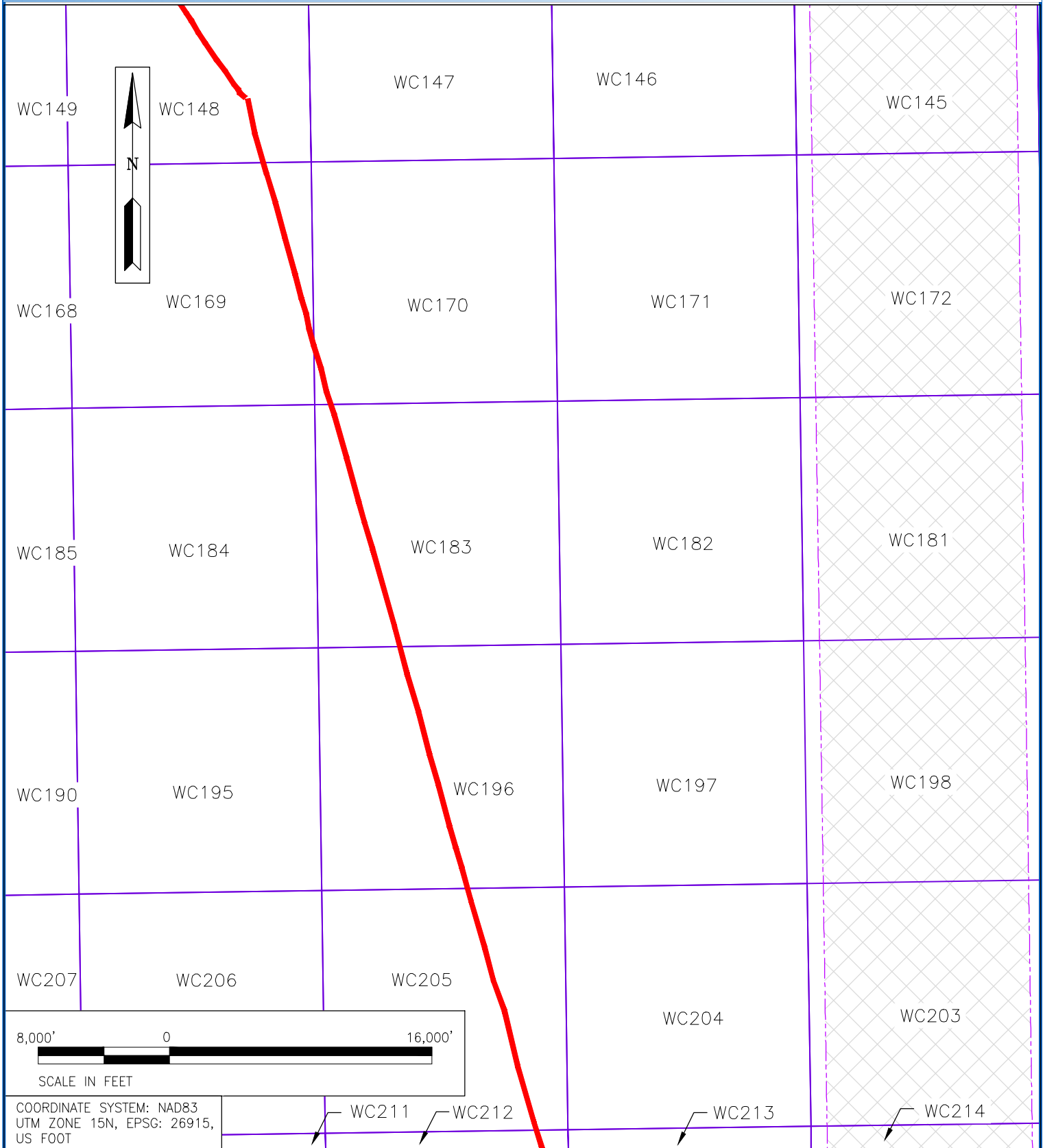


FIGURE 6.D - OCS LEASE BLOCKS CROSSED BY THE BMOP PROJECT

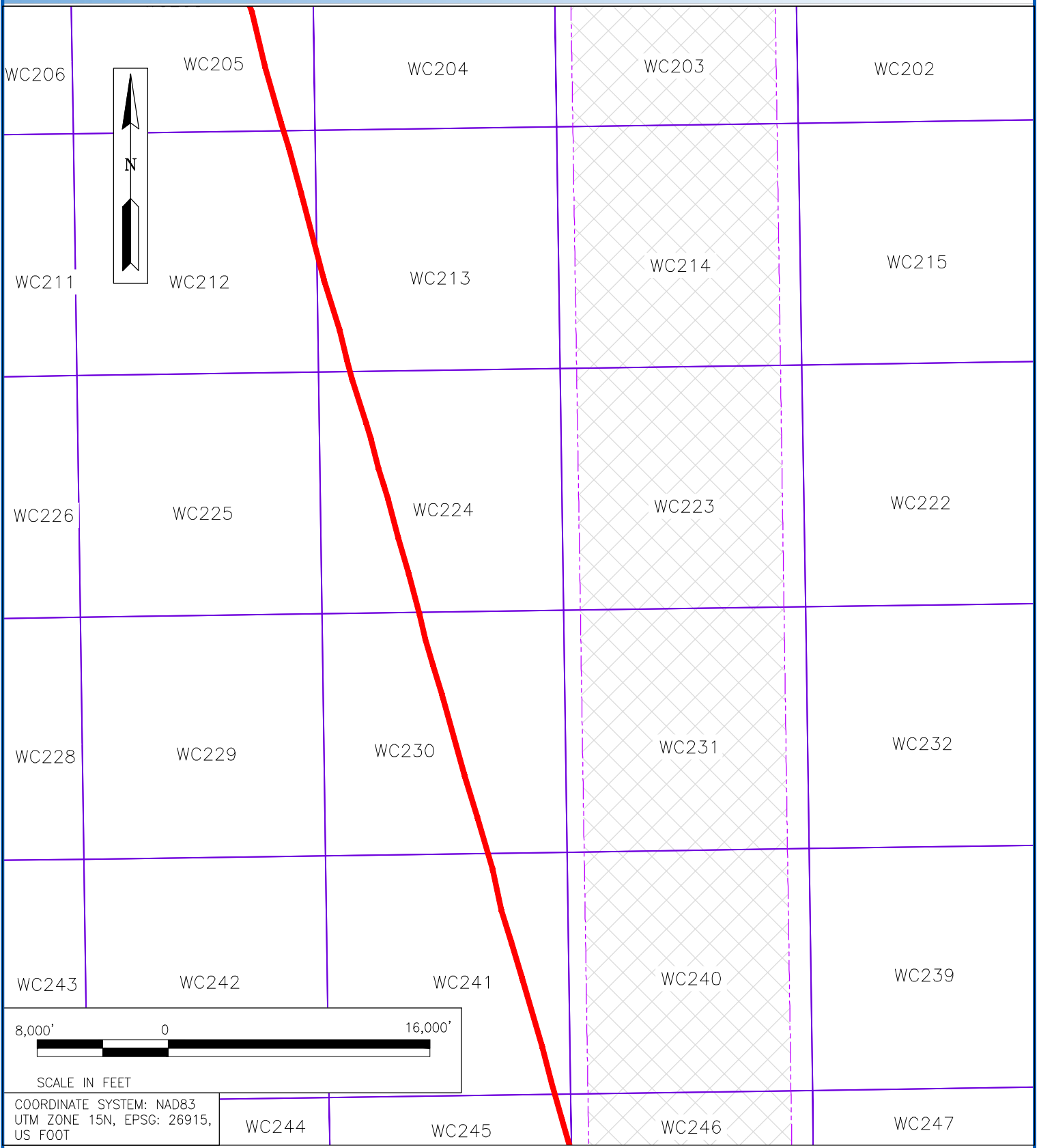


FIGURE 6.E - OCS LEASE BLOCKS CROSSED BY THE BMOP PROJECT

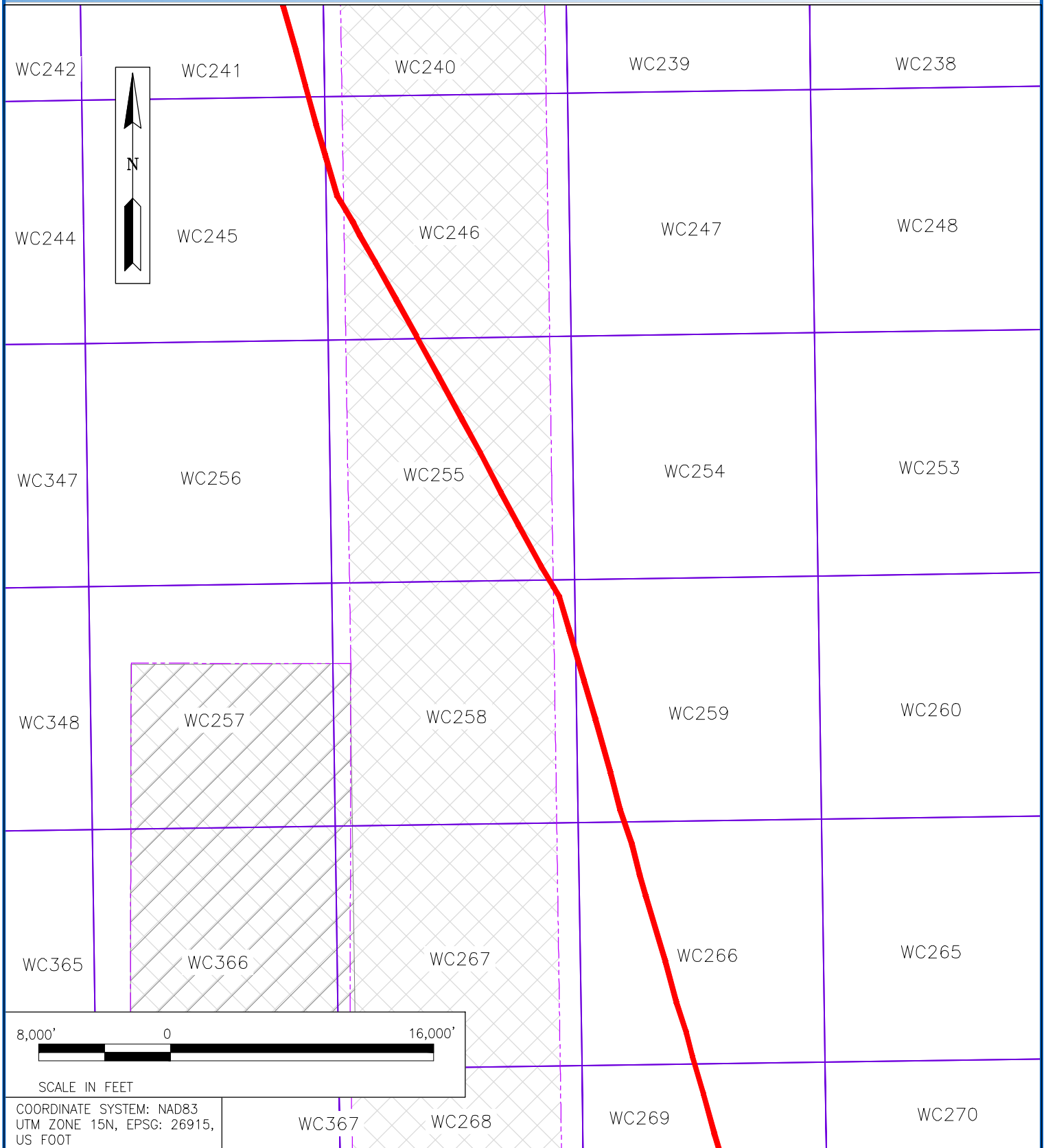


FIGURE 6.F - OCS LEASE BLOCKS CROSSED BY THE BMOP PROJECT

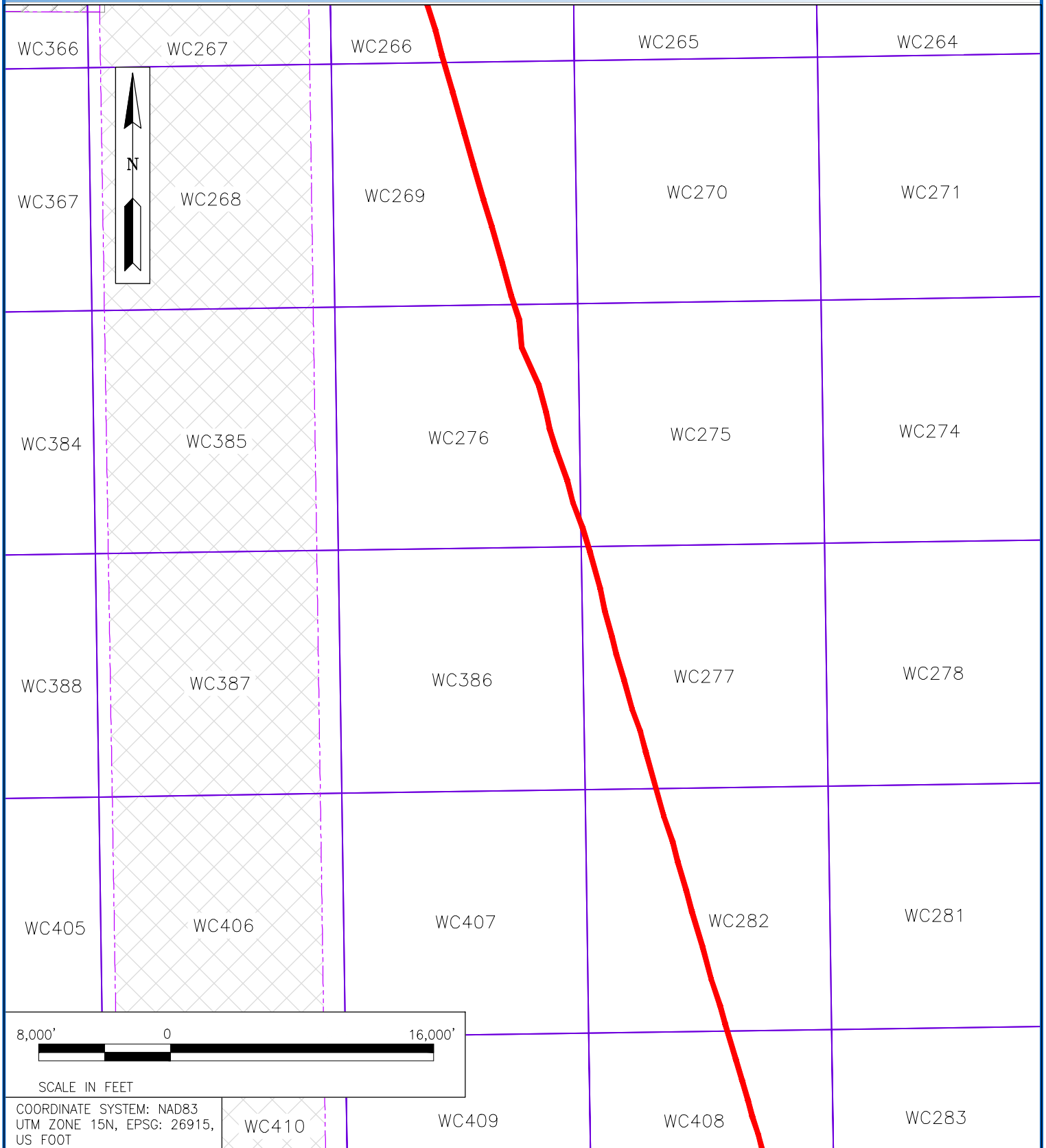


FIGURE 6.G - OCS LEASE BLOCKS CROSSED BY THE BMOP PROJECT

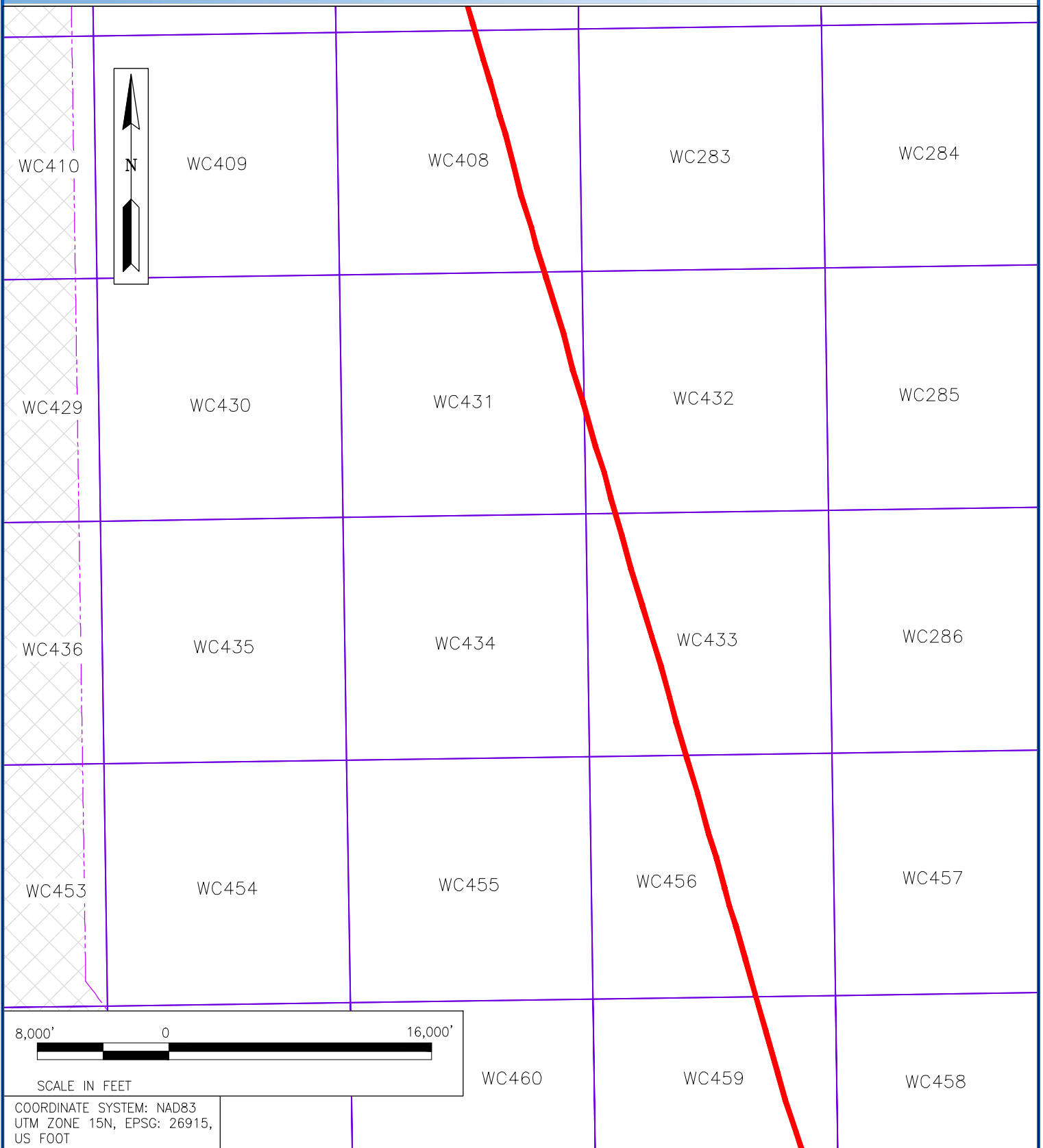
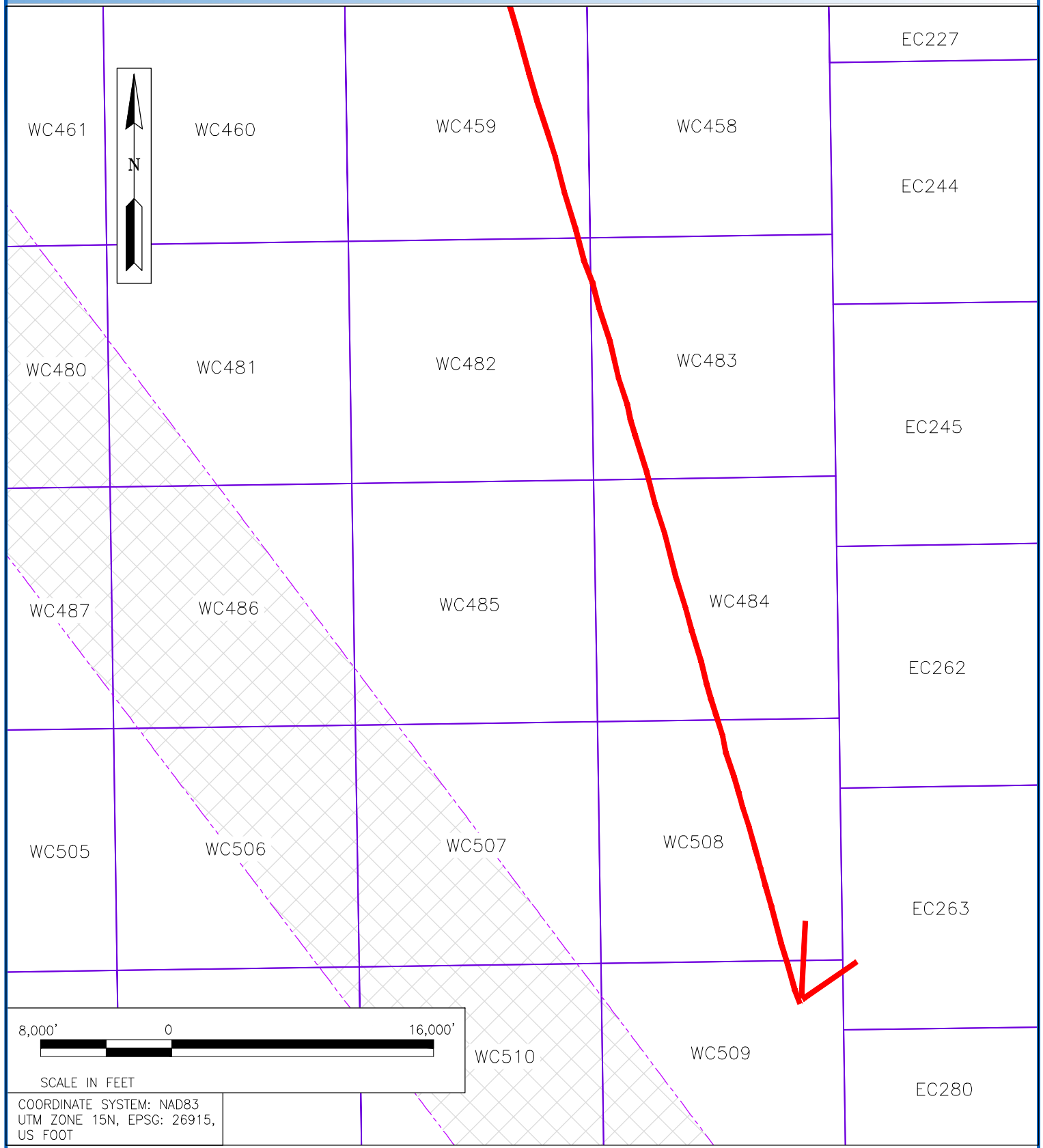
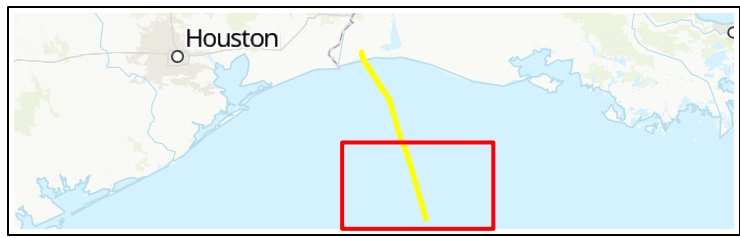
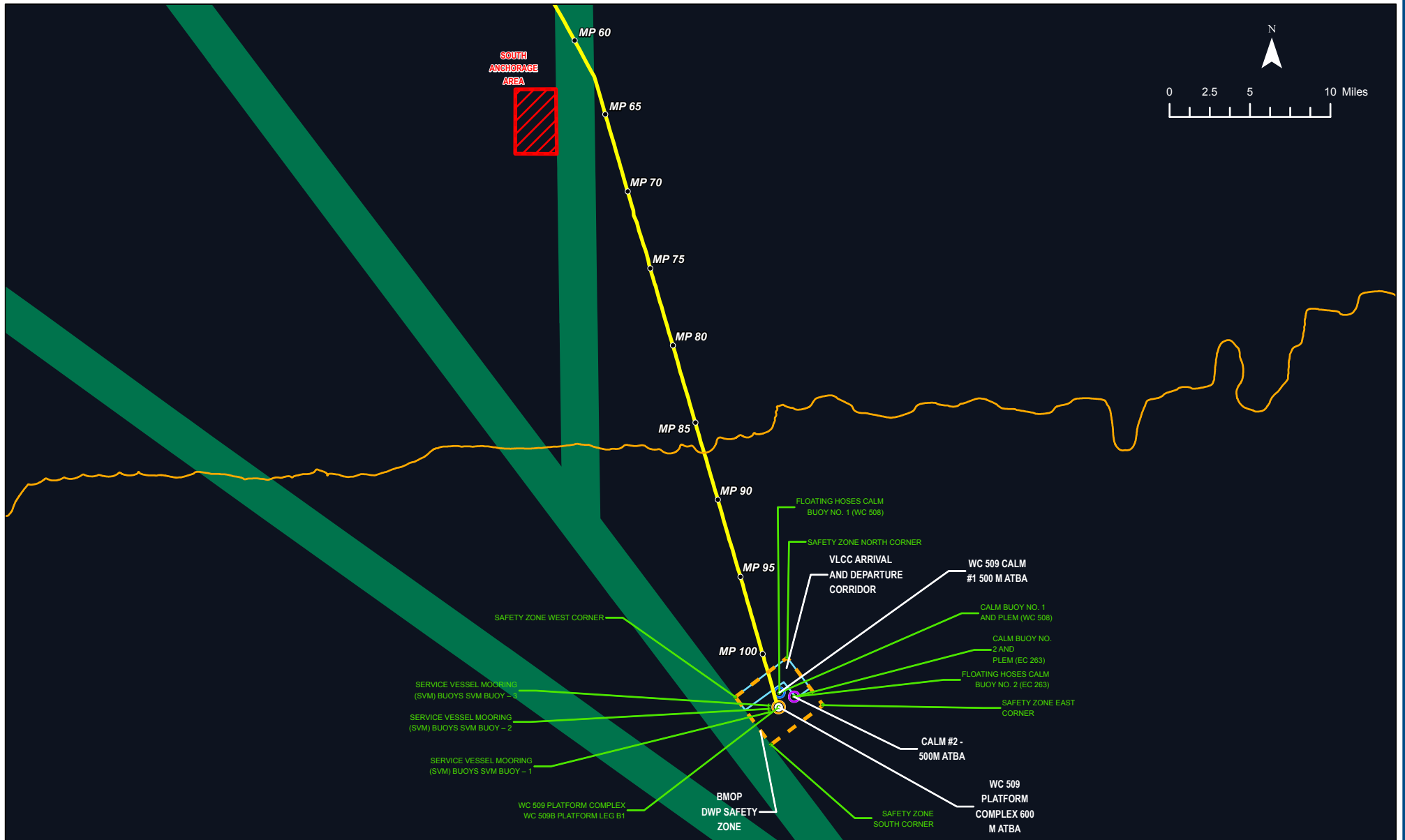


FIGURE 6.H - OCS LEASE BLOCKS CROSSED BY THE BMOP PROJECT



BMOP PROJECT - APPENDIX A FIGURE 7 - EXISTING USCG ANCHORAGE AREA



LEGEND	
●	EXISTING OFFSHORE PIPELINE MILEPOSTS
⊗	LOCATION OF NAVIGATION AIDS
○	DEEPWATER PORT WC-509B AND CALM BUOYS
—	EXISTING PIPELINE TO BE CONVERTED TO OIL SERVICE
—	DEPTH CONTOUR -108'
⊠	BMOP DWP SAFETY ZONE
□	VLCC ARRIVAL AND DEPARTURE CORRIDOR
□	WC 509 CALM #1 500 M ATBA
□	WC 509 PLATFORM COMPLEX 600 M ATBA
□	CALM #2 - 500M ATBA
■	SAFETY ANCHORAGES
■	SHIPPING FAIRWAY

BLUE MARLIN OFFSHORE PORT PROJECT	
USCG DESIGNATED ANCHORAGE AREA	
COUNTY/PARISH:	N/A
STATE:	TX/LA
DRAWN BY:	JRA
CHECKED BY:	CW
DATE:	2020/09/21
PROJECTION:	NAD 1983 UTM Zone 15N

PREPARED BY

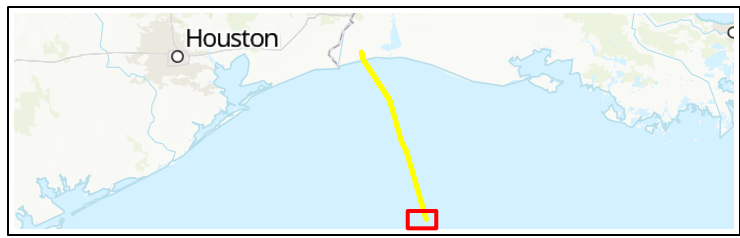
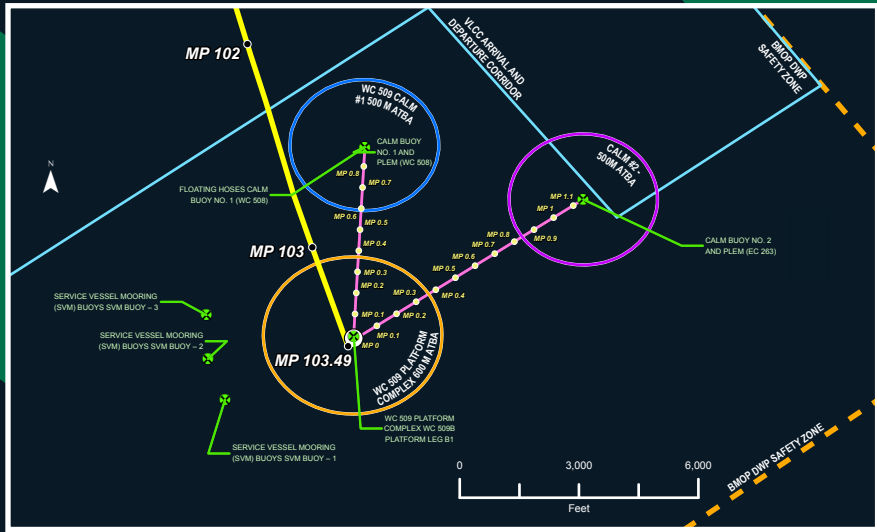
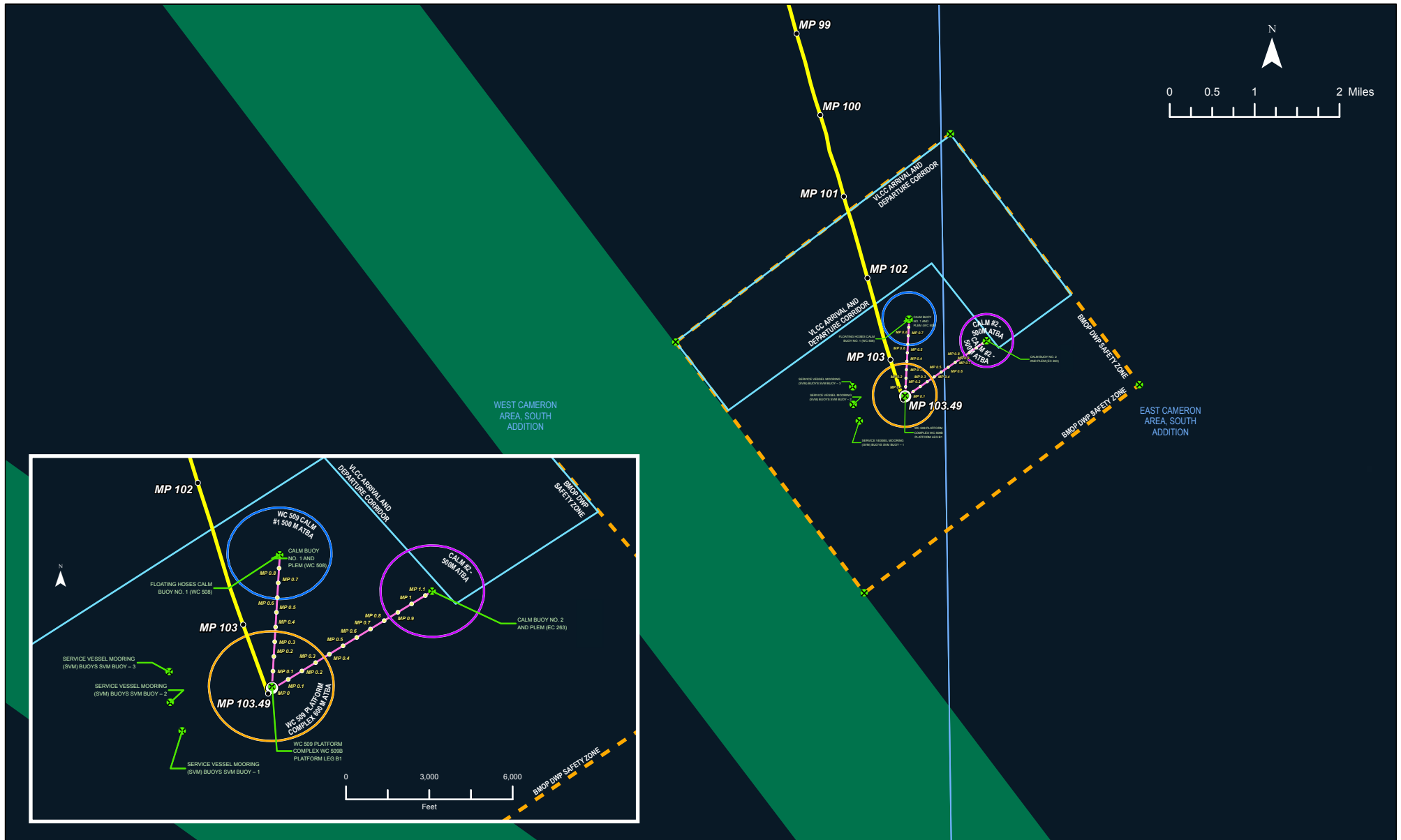
EXP Energy Services Inc.

T: +1 850 385 5441
F: +1 850 385 5523
1800 WEST LOOP SOUTH, SUITE 850
HOUSTON, TX 77027, USA

BLUE MARLIN OFFSHORE PORT PROJECT
APPENDIX A FIGURE 7

DWG: 0802-01-063 SHEET: 1 OF 1

BMOP PROJECT - APPENDIX A FIGURE 8 - DWP OVERVIEW



LEGEND	
● EXISTING OFFSHORE PIPELINE MILEPOSTS	□ PLATFORM RISER JACKET
○ PLATFORM PIPELINE MILEPOSTS	▭ VLCC ARRIVAL AND DEPARTURE CORRIDOR
⊗ LOCATION OF NAVIGATION AIDS	▭ WC 509 CALM #1 500 M ATBA
○ DEEPWATER PORT WC-509B AND CALM BUOYS	▭ WC 509 PLATFORM COMPLEX 600 M ATBA
— EXISTING PIPELINE TO BE CONVERTED TO OIL SERVICE	▭ CALM #2 - 500M ATBA
— BMOP DWP SAFETY ZONE	▭ SHIPPING FAIRWAY

BLUE MARLIN OFFSHORE PORT PROJECT DWP OVERVIEW	
COUNTY/PARISH: N/A	DRAWN BY: JRA
STATE: TX/LA	CHECKED BY: CW
DATE: 2020/09/21	PROJECTION: NAD 1983 UTM Zone 10N

PREPARED BY	
EXP Energy Services Inc.	
T: +1 850 385 5441	
F: +1 850 385 5523	
1800 WEST LOOP SOUTH, SUITE 850	
HOUSTON, TX 77027, USA	
BLUE MARLIN OFFSHORE PORT PROJECT APPENDIX A FIGURE 8	
DATE: 2020/09/21	PROJECTION: NAD 1983 UTM Zone 10N
DWG: 0802-01-063	SHEET: 1 OF 1

FIGURE 9 - TYPICAL CALM BUOY MOORING

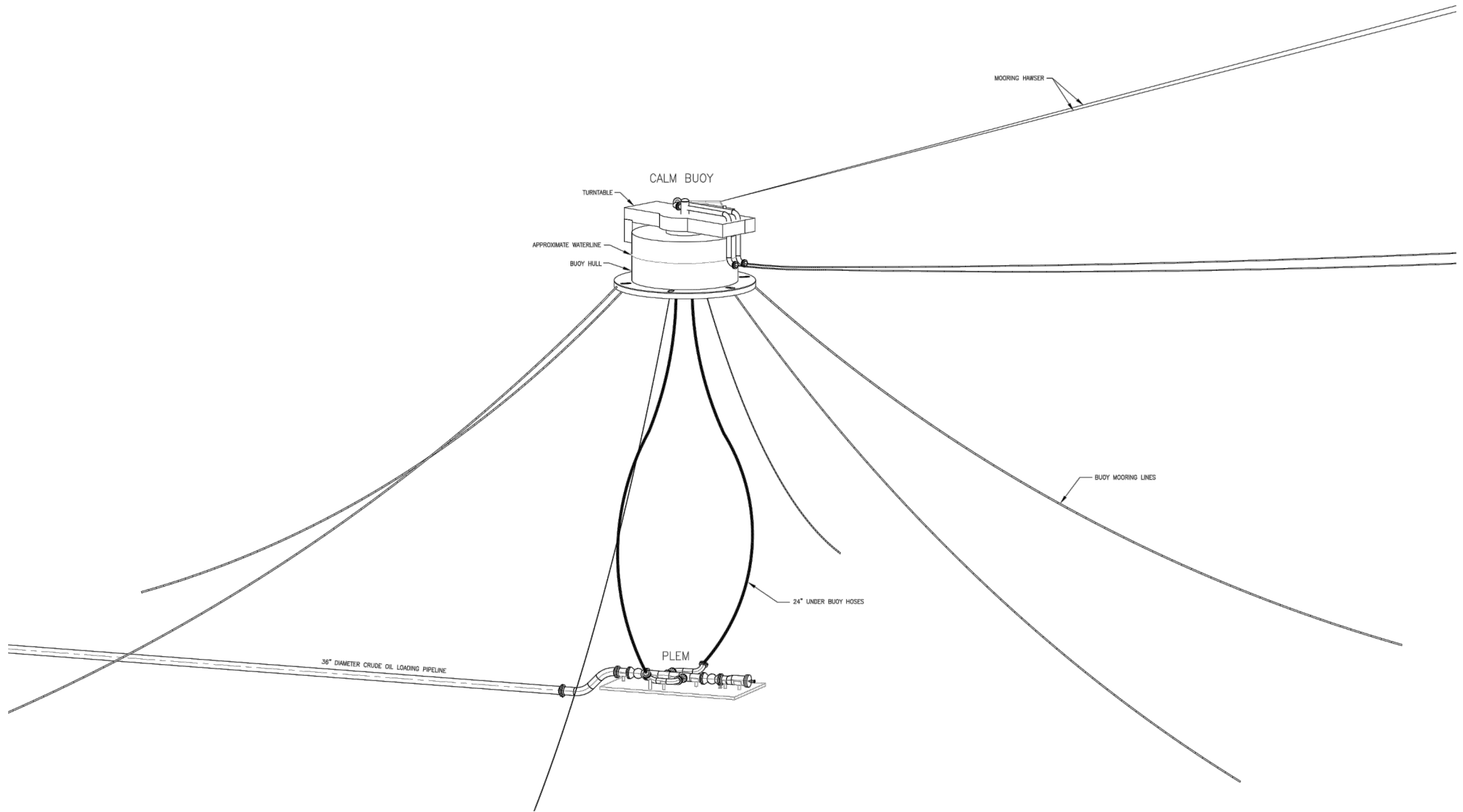
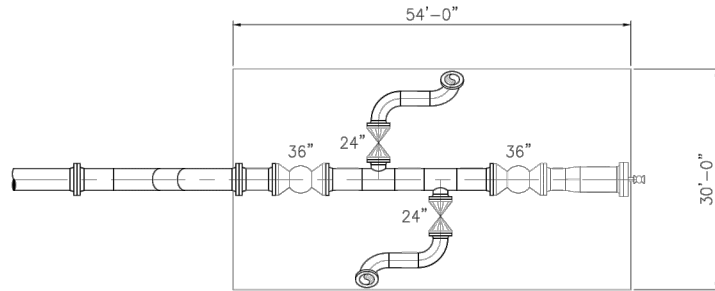
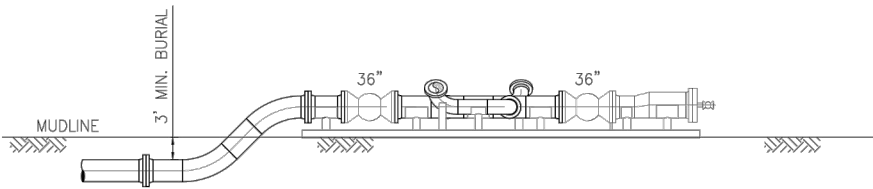


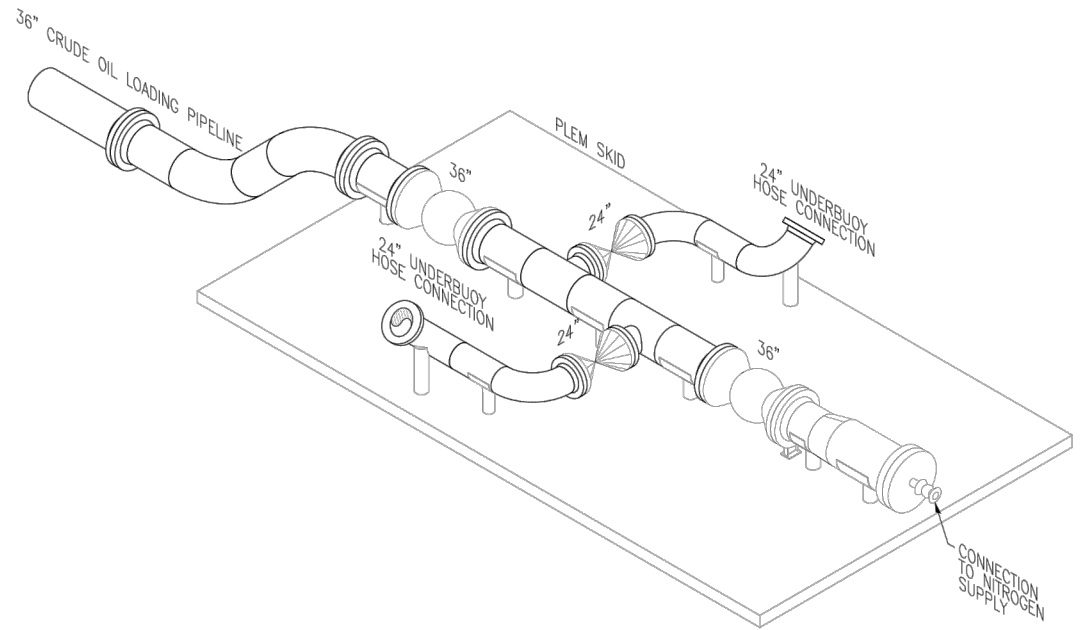
FIGURE 10 - PLEM SCHEMATIC



PLAN
SCALE: N.T.S.



ELEVATION
SCALE: N.T.S.

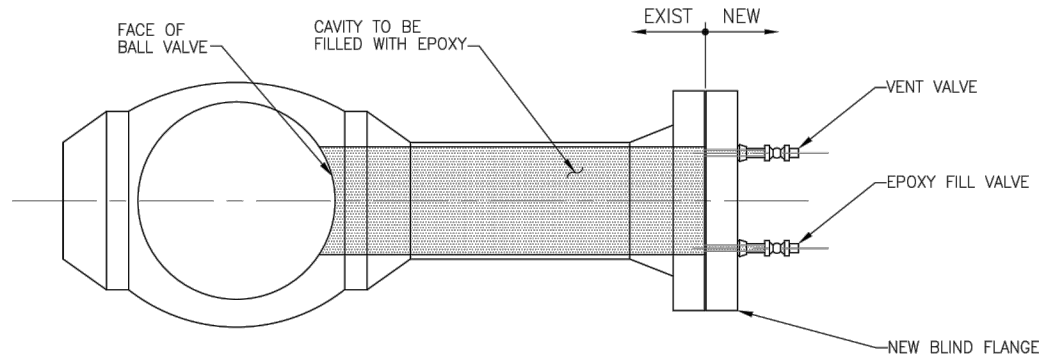
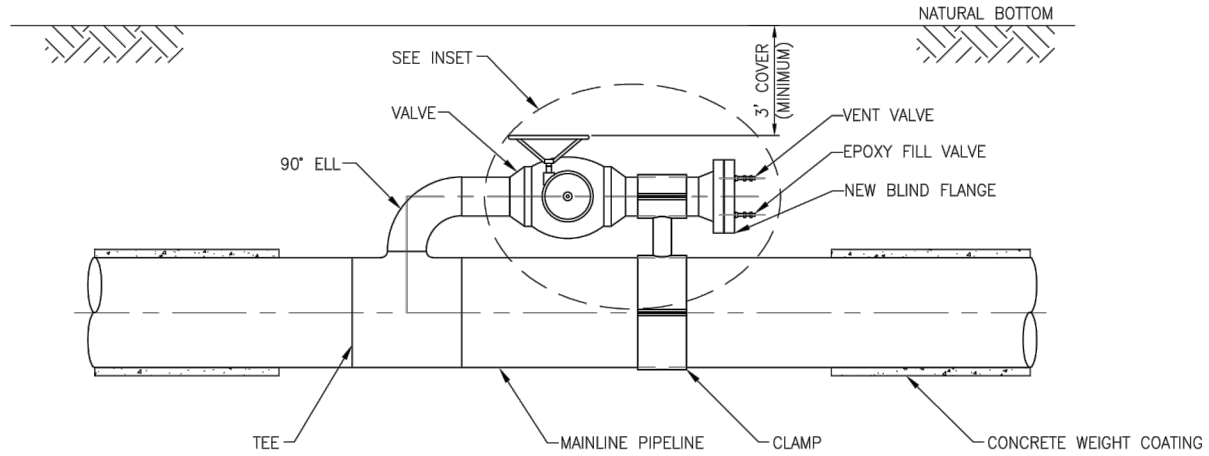


ISOMETRIC
SCALE: N.T.S.

FIGURE 11 - TYPICAL MAINLINE SIDETAP

TYPICAL EPOXY-FILLED SUBSEA TIE-IN (SSTI)

SCALE: N.T.S.



INSET - AFTER FILLING WITH EPOXY